



Mission - *Dramatically extend lives of cancer patients*

Products - Novel drugs to activate the immune system

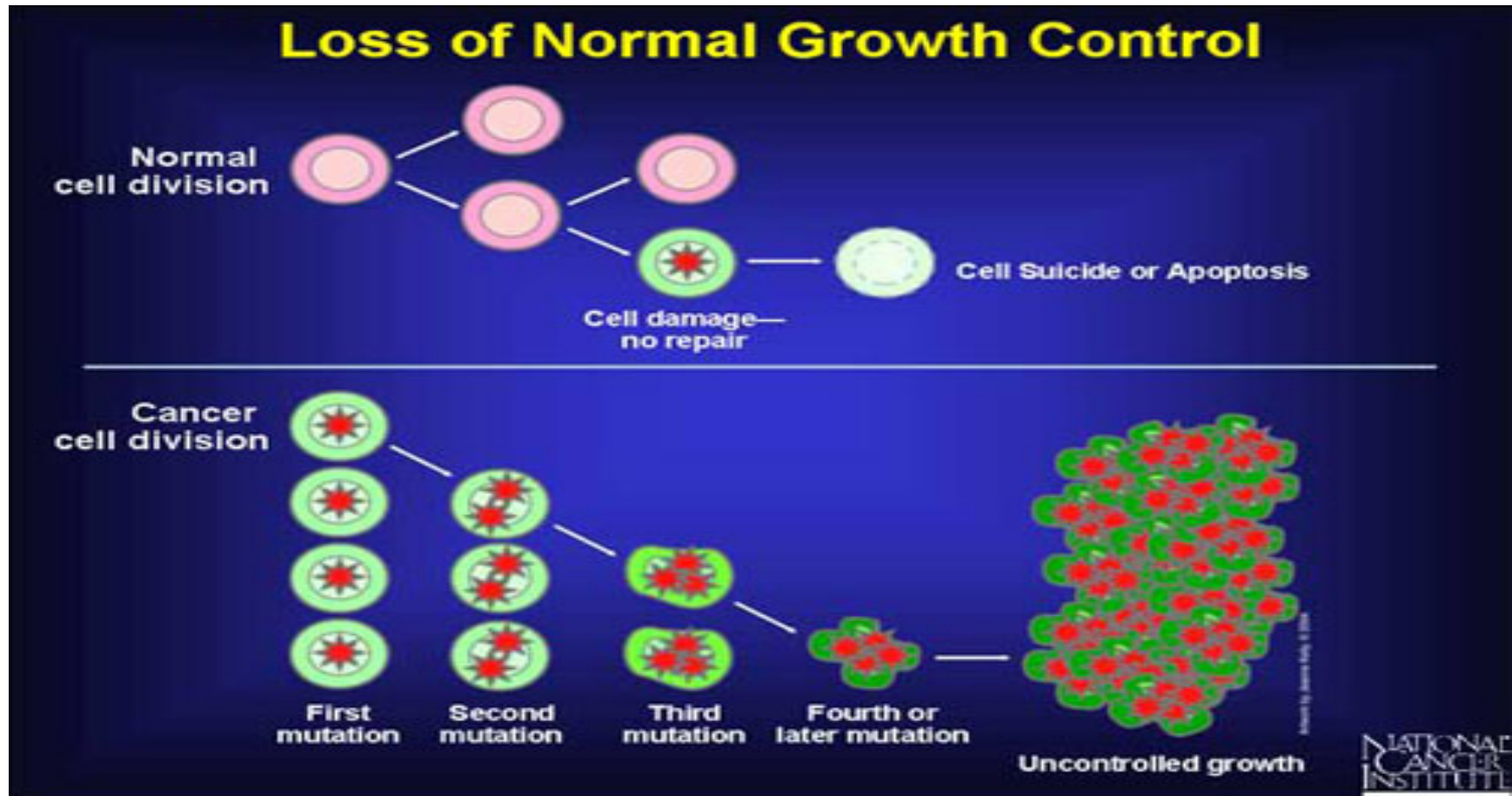
Lewis H. Bender : President & CEO



@IntensityInc

www.intensitytherapeutics.com

What is cancer & how does cancer occur?



The immune system normally defends the body against cancer

Intensity's solution: *Convert tumor to antigen*

Dose locally : Act globally



Our drugs kill bulky tumors

Product Platform: DfuseRx



Sets up global immune attack

Lead product: INT230-6

Business Overview

Private company founded in 2012

- **Awarded CRADA partnership by the US National Cancer Institute in 2014**
- **All intellectual property is fully owned by Intensity**
- **US FDA and Health Canada - development plan agreement**
- **Raised more than \$11 million to date**

Experienced team



Chief Executive Officer: **Lewis H. Bender MIT S.B, S.M., MBA**

CEO: Interleukin Genetics

CEO, CTO, VP, BD & Manufacturing: Emisphere Technologies

- Preclinical through Phase III development experience
- Financings: Include PIPES, S1, S3 filings, RD, JVs,
- Formed and managed partnerships with major pharmaceutical companies including; Roche, Novartis, Lilly, Elan,



Chief Medical Officer: **Ian B. Walters, MD, MBA**

- Business Development/Corporate development : BMS, Sorrento
- Clinical Development 30+ compounds: Sorrento, BMS, Millennium, PDL , Rockefeller University
- Translational Medicine: Rockefeller University, Sorrento, PDL
- Commercial, health economics: Millennium, BMS

Scientific Advisory Board



Jay A. Berzofsky, MD, Ph.D

Chief, Vaccine Branch

Masaki Terabe, Ph.D.



Riccardo Lencioni, MD, PhD

Professor of Radiology

Director, Interventional Oncology Research



Mario Sznol, MD

Professor of Medicine (Medical Oncology)

Program Leader, Melanoma Program

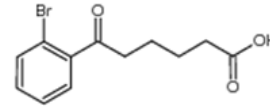
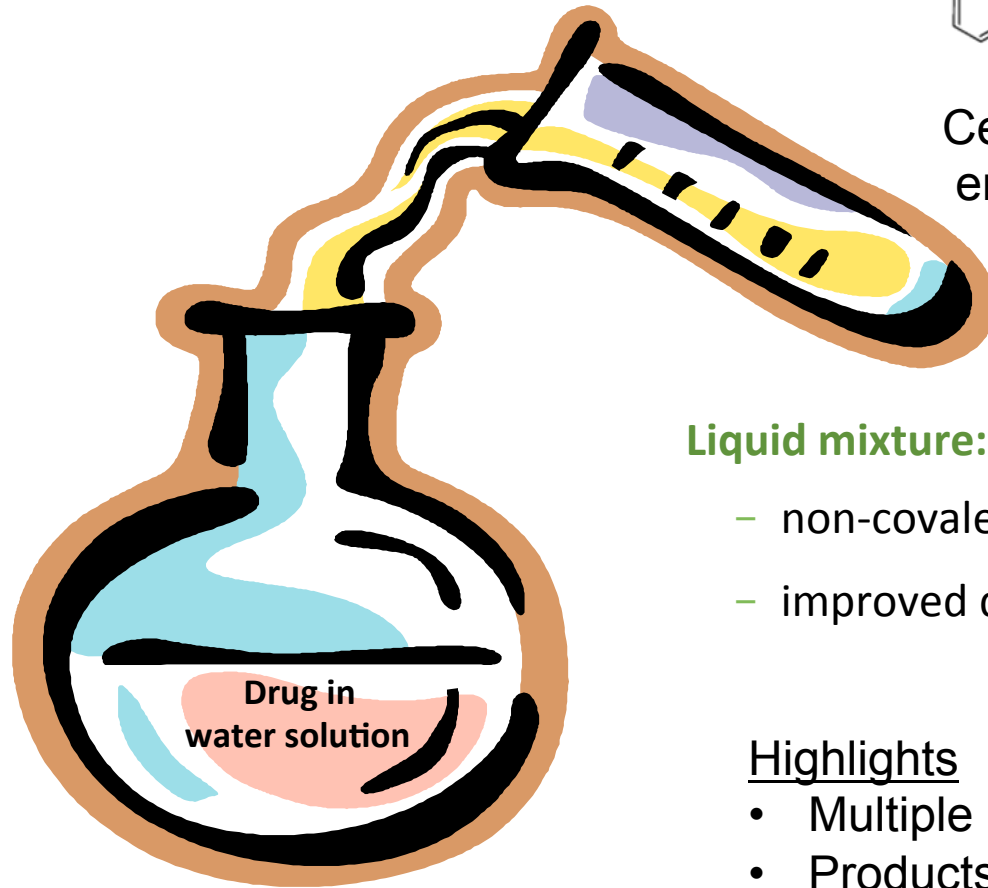


Douglas Hanahan, PhD

Professor of Medicine and Head of the Swiss

Institute for Experimental Cancer Research

DfuseRxSM Technology platform: Creating products



Cell penetration
enhancers

+

1 or more anticancer
agents

Liquid mixture: forms enhancer-drug molecular complex:

- non-covalent binding
- improved drug **lipid and water** solubility

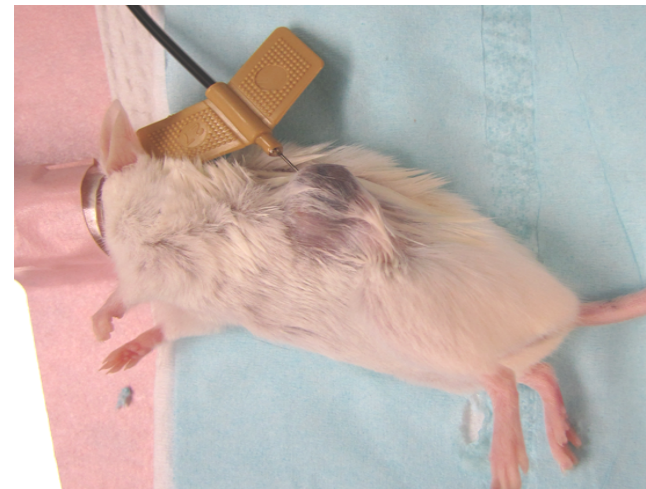
Highlights

- Multiple product formulations possible
- Products are simple to manufacture
- Low COGS, less technical risk

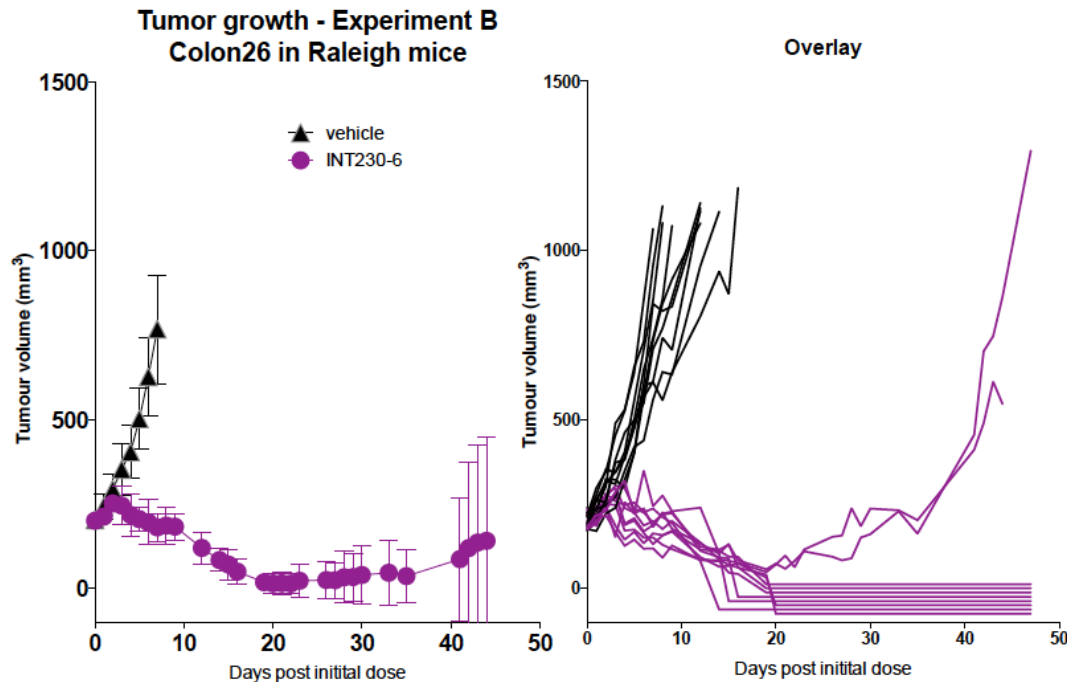
The DfuseRx platform has identified a potent anticancer drug: INT230-6

Testing in mice

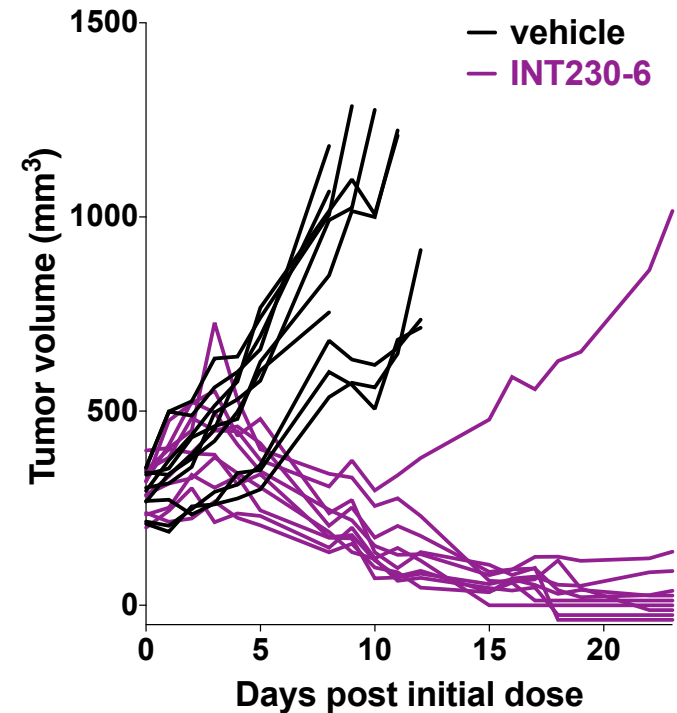
- Intensity tests in severe and large tumor models
- Models with metastases
- Low doses of our product
- Comparison made to best products on market



Development efforts have improved INT230-6 efficacy & the NCI has reproduced our results



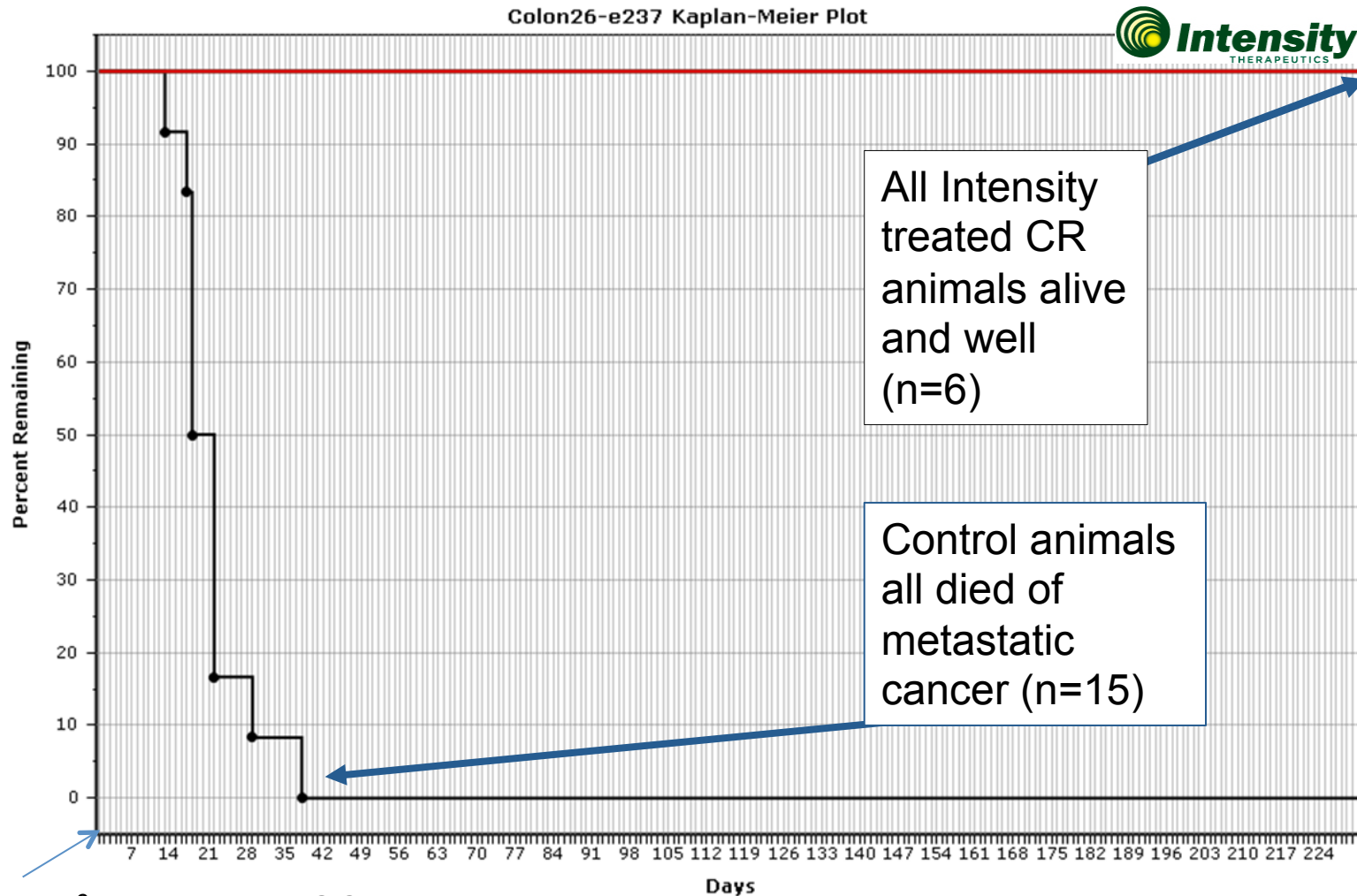
Starting with >200mm³ volumes,
all tumors shrink, 80% Complete Response



300mm³ volumes, all
tumors shrink, 60% CR

How do complete responders do if re-inoculated with cancer?

Colon26-e237 Kaplan-Meier Plot



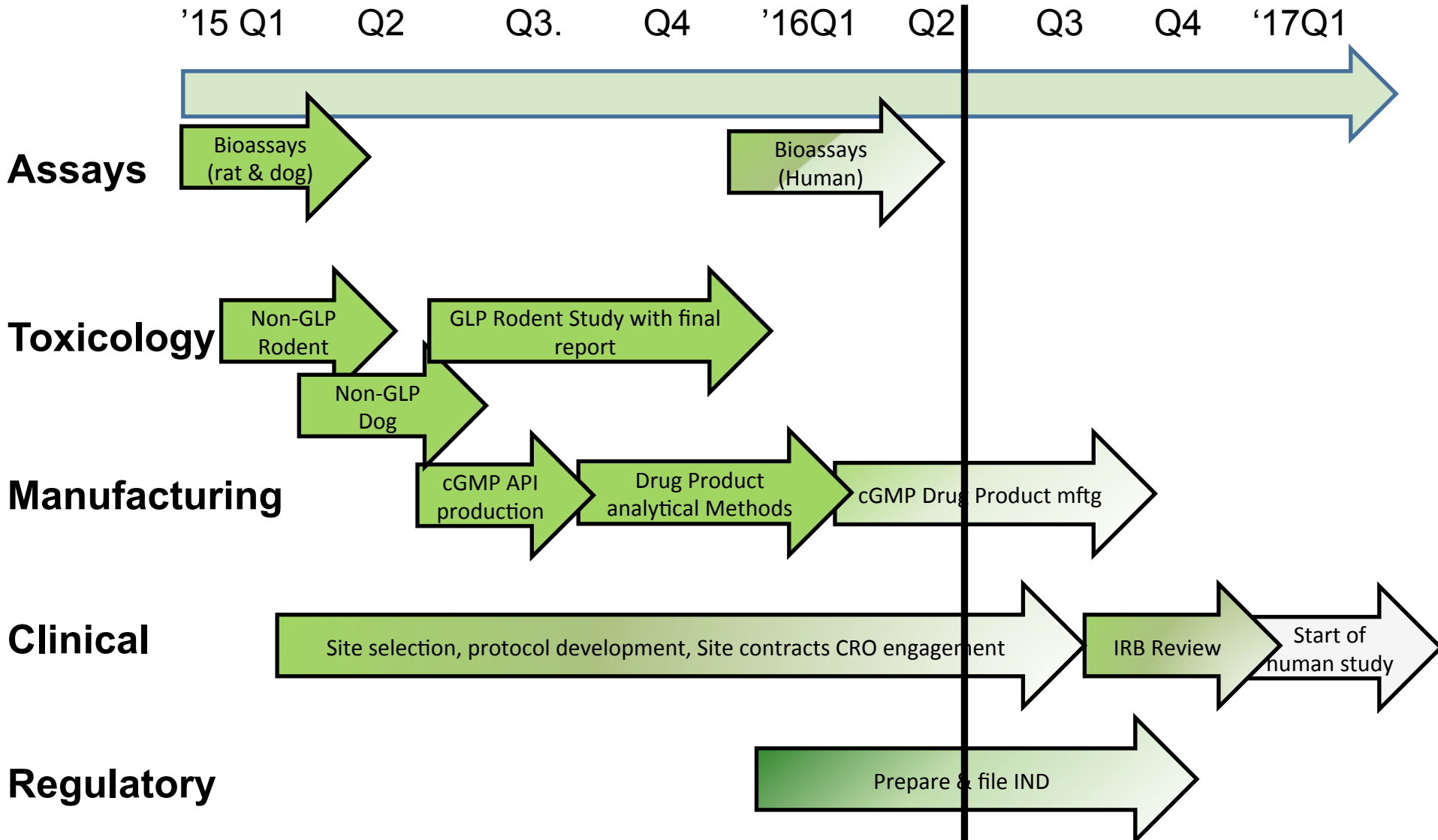
1×10^6 cancer cells SC, then IV re-inoculation

Achievements: *in vivo*

- Efficacy against breast, colon and pancreatic cancer
- Prevents metastases
- Regression of untreated, distal secondary tumors
- Strong synergy with immunotherapy drugs
- Immunity against one cancer leads to increased resistance against other cancers

- Mechanism of action research shows strong T-cell activation

Clinical study Activities timeline



Intensity's road to success

- Experience management team, leading KOLs, **low cash burn**
- Strong activity in rigorous animal models
 - Expect good translation in humans
- Large market opportunity in the hot area of immune oncology
 - Lead indications: colon, pancreatic, & liver cancer - not well served
- Rapid clinical proof of concept → Value inflection
 - IND/CTA filing, initiate Phase 1/2 studies end of 2016 early 2017